

Thank You for Supporting
RSVP Volunteers!



901 E. 8th Avenue, Suite 200
King of Prussia, PA 19406
(610) 834-1040
www.rsvpmc.org



JULY 16, 2024
RIVERCREST GOLF CLUB & PRESERVE

Thank You to Our Sponsors



TOPGOLF

St. John Holdings, Inc.

PORSCHE
Porsche Main Line

boomi



CITADEL
CREDIT UNION
Building Strength Together



RISLER
FINANCIAL
MANAGEMENT



Displays and Graphics Inc.



THE HAVERFORD TRUST COMPANY

Acts
Where Loving-Kindness Lives

FIRSTBANK
Personal Bankers. Real Relationships.



UBS

STIFEL



Peoples Security
Bank & Trust Est. 1905



Waverly Heights

UNIVEST
BANKING | INSURANCE | INVESTMENTS
Member FDIC

STRADLEY RONON

Walter Fisher

Martha Simelaro

Gita Srinivasan

MERCK SHARP & DOHME
FEDERAL CREDIT UNION

SARGENT
WEALTH MANAGEMENT
OF JANNEY MONTGOMERY SCOTT LLC

pentahealth

SEDONA
TAPHOUSE
PHOENIXVILLE | WEST CHESTER

TRIM
EMPLOYEE OWNED

KEYSTONE

ACRISURE

Ludwig

Richard & Dottie Singer

MERRILL
A BANK OF AMERICA COMPANY

TODAY'S INNOVATOR

MARCUM
ACCOUNTANTS & ADVISORS

SPORTS & TRIPS

Frank & Sue Jakiela

PARAMOUNT
Communications

ZOMMICK MCMAHON
COMMERCIAL REAL ESTATE

ARDMORE TOYOTA

Wegmans
Alan & Joan Kober

KERSHNER Office Furniture
DRESHER
DENTAL

FIREBIRDS
FB
WOOD FIRED ONLY

REEDMAN TOLL
HONDA OF DOWNTOWN
HEALTHMATS

CHAP'S
TAPROOM
EST. 1999

Gene & Ginnie Davidov

Compass RE

State Farm

fnp
AN ARTISTA COMPANY

Cindy & Sam Auslander

Community Healing4All.org

Bishop Mary
Enterprises LLC

n
Northmarq

Mattioni

ONEL NISSAN

Thank You to Our Title Sponsor



TOPGOLF

King of Prussia, PA

TOPGOLF

LESSONS AND CLASSES

Are you new to golf and want to learn the basics? Or maybe you're new in town and want to find a new golf instructor? These single lesson options at Topgolf King of Prussia would be a great fit for you.

PLAN YOUR PARTY

If you're interested in hosting your party at Topgolf King of Prussia, give us a call at (484) 806-2483 or request more info and we'll make your time at Topgolf as turn-key as it gets.

Thank You to Our Generous Sponsors



Rich Bowren LUTCF, Agent
President's Club
1 Mele Ave., Colmar, PA 18915
Bus 267-649-7417 Fax 888-557-7053
rich@richbowren.com
www.richbowren.com
NMLS #139716 NMLS MLO #262484 MLO License #39739
Licensed by the PA Dept. of Banking
Good Neighbor Agent since 1990



**Sam
& Cindy
Auslander**

**Gene
& Ginnie
Davidov**

**Frank
& Sue
Jakiela**

**Alan
& Joan
Kober**



Program

July 16, 2024
RiverCrest Golf Club & Preserve
Phoenixville, PA

10:00 AM	Registration
10:45 AM	Lunch
11:45 AM	Shotgun Tee-Off
5:00 PM	Cocktails
5:45 PM	Dinner (Buffet Style) Awards Ceremony Live Auction
7:00 PM	Dessert & Coffee

Thank you for your support and participation in our Seventh Annual Golf Outing. We hope the day is memorable and fun! Your supports help us continue to serve 10,000 vulnerable community members annually.

Please scan the QR code if you would like to learn more about RSVP, explore our volunteer opportunities, or make a donation.



Welcome!



Dear Friends,

I am delighted to welcome you to our Seventh Annual Golf Classic. We look forward to this outing every year when we enjoy a day with old friends and new connections to benefit our volunteer programs.

This event reminds us of the incredible impact we can make when we come together. Your participation and generous support enable us to provide critical education and wellness programs free of charge to the community.

I want to extend a special thank you to our sponsors, staff, and board members for their role in making this event possible. It is going to be a wonderful, memorable outing!

As you enjoy the day, please know that your presence here today is a testament to your generosity and compassion. Together, we are building a brighter future and creating lasting change.

Thank you once again for your participation and support today. We are so grateful and hope to welcome you back again next year. Enjoy!

With sincere gratitude,

Michele Moll
Executive Director

Thank You to Our Generous Sponsors





Thank You

**Martha
Simelaro**

For Your Support!



RSVP Staff

- Lanette Bigley, Bookkeeper
- Julie Brown, Family Literacy Program Coordinator
- Kathryn Buchovecky, Digital Literacy Associate
- Sheri Burke, Volunteer Executive Consultants (VEC) Program Manager
- Janet Dalzell, Project Manager
- Maria Dell, My Free Tutor/STEM Program Coordinator
- Barbara Fitzgerald, Development Coordinator
- Tony Giunta, Director of Operations
- Michelle Hang, Digital Literacy Training Manager
- Douglas Keene, PA MEDI Program Coordinator
- Jackie Matusow, Elementary Literacy Program Coordinator
- Lydia Messinger, Development Manager
- Michele Moll, Executive Director
- Maryann Pigage, Administrative Support
- Faria Rota, Outreach Coordinator Digital Literacy Program
- Maria Samson, Corporate Relationship Manager
- Craig Soloff, Database Specialist
- Kathy Stocker, Community Outreach & Volunteer Coordinator
- Karen Strauss, Compliance Coordinator
- Sara Todd, PR/Communications Manager
- Janet Treiman, Volunteer Services Coordinator
- Donna Uhler, PA MEDI Program Advisor
- Geren Weaver, Development and Grants Associate

RSVP Board of Directors

Board Officers

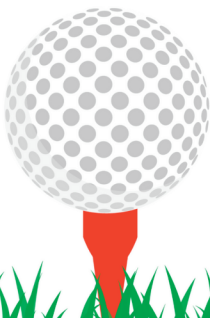
Ron Gawel, President
Richard Singer, Vice President
Noah Borenstein, Secretary
John Holody, Treasurer
George Rizzuto, Assistant Treasurer

Board Members

Dr. Thomas Brennan	Pranay Mital
Peter Caputo	Ian Matlack
Katherine Carter M.S. Ed	Mary Floyd Palmer, Ph.D.
Gene Davidov	Rasmeet Sachdeva
Michael Dell	Rachel Sherman-Presser
Linda J. Gedney	Martha Simelaro
Raymond Heath, Ph.D.	Gita Srinivasan
Frank Jakiela	Megan Stamm, Esq.
Alan Kober	Ronald Williford

Board Members Emeritus

Alan Frankel
Walter Fisher, Jr.



Thank You

**Gita
Srinivasan**

For Your Support!



MERCK SHARP & DOHME
FEDERAL CREDIT UNION

is proud to support **RSVP**



Chalfont • Collegeville • Lansdale
Harleysville • Quakertown
215-996-3700 | msdfcu.org

Michael Grover
mgrover@msdfcu.org
215-996-3744



Join Today!

**ASK US
HOW!**

PROTECT & GROW

WHAT YOU WORKED SO HARD TO BUILD



INSURANCE



VOLUNTEER
INSURANCE



EMPLOYEE
BENEFITS



CYBER
SECURITY



+ MORE

For more information:

800-468-4200 | acrisure.com/mid-atlantic



New patients always welcome.

www.pentahealth.com

610-423-8181



L to R:
Dr. Maria DeMario,
Dr. I. Dennis Holgado,
Dr. Nicholas Kalman,
Dr. John Khalifa,
Stacey Yantis (CRNP),
Dr. Stephen Belfiglio,
Dr. Valerie McJuley,
Dr. Michael McGuire,
Elizabeth Facciolo (CRNP),
Sarah Smith (CRNP),
Dr. Lauren Kummer,
Dr. Susan Leath,
Dr. David Lewis,
Carrie Karhak-Glasby (CRNP),
Suzannah Maynard (CRNP),
Dr. Mariele Briones,
Dr. Christopher Bruno,
Dr. Neema Chokshi,
Dr. Matthew Kane,
Dr. Arti Patel,
Debbie Preble (CRNP),
Dr. Douglas Atlas,
Dr. Qurratulain Baig,
Dr. Katherine Chin,
Dr. Mica Kane,
Dr. Heather Lockner,
Dr. Jean Stretton,
Dr. Jane Sunoo,
Dr. Susan Kohli,
Dr. Monika Kumarnova,
Dr. Marianne Nikas,
Dr. Drew Rowan,
Dr. Gene Uhler,
Dr. Alpa Vadher,
Erin Lender, (CRNP),
Denise Meli (CRNP),
Dr. Brian Boucher,
Dr. Charles Catania,
Dr. John Hornick,
Dr. Sissy John,
Dr. Sony John,
Dr. George Limpert,
Dr. Karen Squire,
Dr. Madeline Wood,
Andrea Leffet (CRNP),
Anita Snyder (CRNP),
Sue Villarini (CRNP),
Dr. Vilasta Bamezai,
Dr. Harmony Bonnes,
Dr. Francis Brennan,
Dr. Victoria Brosius,
Dr. Eric DiCicco,
Dr. Laurie Gallagher,
Dr. Neeraja Peri,
Dr. Jessica Schleusner,
Dr. Rannette Schurtz,
Dr. Eric Yeh,
Laurie Taylor (CRNP)

RSVP Golf Committee

Special thanks to the RSVP Golf Committee,
whose hard work and dedication to our
community made this outing a huge success:

Tony Giunta
Michelle Hang
Lydia Messinger
Michele Moll
Maria Samson
Sara Todd
Geren Weaver



Special thanks to our amazing board members for their help
with introducing new partners to our Golf Classic!
Your effort made this outing possible.

Thank you to RSVP's staff for all of your efforts to support
today's outing!



RSVP Volunteers will help you find an assignment in Chester, Delaware, Montgomery, or Philadelphia that fits your schedule, utilizes your skills, and matches your area of interest.

EDUCATION VOLUNTEER OPPORTUNITIES

- Read to preschool students virtually or in the classroom to inspire a love for reading.
- Be a virtual or in-classroom reading coach for elementary students developing their reading and critical thinking skills.
- Tutor students, from third grade to college level, online on basic math skills.
- Share your STEM career journey virtually or in-class to inspire and enlighten students.
- Teach adults basic digital skills to feel confident on their devices.

WELLNESS VOLUNTEER OPPORTUNITIES

- Help seniors understand complex Medicare topics as a Medicare counselor.
- Pack or deliver warm meals for homebound, low-income seniors.
- Support seniors' independent living: help with shopping, transportation, or friendly visits.
- Help with local community needs: food pantries, blood drives, thrift shops, and more.

Scan the QR code to enroll as a volunteer

Contact:

volunteer123@rsvpmc.org
or call 610-834-1040 ext 123



Thank You

**Rich
and
Dottie
Singer**

For Your Support!





RSVP Programs

RSVP improves lives of vulnerable populations in the local community by focusing on education and wellness.



Family Literacy

Volunteers read aloud to Head Start preschoolers to excite students about reading and expose them to letters, colors, sounds and storytelling.

Books are gifted to students several times a year ensuring that each child will have a book to call their own along with reading tips for parents to promote reading at home.

Visit to learn more: www.rsvpmc.org/family-literacy

SARGENT WEALTH MANAGEMENT PROUDLY SUPPORTS RSVP'S ANNUAL GOLF CLASSIC



Janney

SARGENT
WEALTH MANAGEMENT
OF JANNEY MONTGOMERY SCOTT LLC

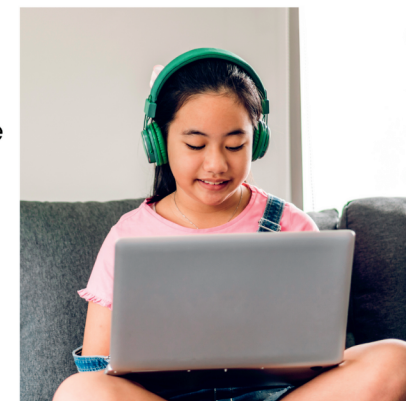
Sargent Wealth Management of Janney Montgomery Scott LLC

701 East Gate Drive, Suite 210, Mt. Laurel, NJ 08054
1010 Stony Hill Road, Suite 300, Yardley, PA 19067
856.291.5038 • 267.685.4205 • TF 866.624.8181

psargent@janney.com • 856.291.5038 • 267.685.4205
www.SargentWealthManagement.com

Virtual Literacy

Volunteers work with 1st - 5th grade students via Zoom sessions to enhance reading skills. Students read grade-level books to volunteer reading coaches and then discuss the storyline. Student progress is tracked with feedback going to teachers.



Visit to learn more: www.rsvpmc.org/virtual-literacy

RSVP Programs

RSVP improves lives of vulnerable populations in the local community by focusing on education and wellness.

Elementary Literacy

Reading coaches encourage K-5th grade students who are struggling with reading and comprehension. These individual sessions enable the volunteer to focus on the student and his/her unique needs, eliminating the fear many students have of reading aloud in front of the classroom.



Visit to learn more: www.rsvpmc.org/elementary-literacy



Digital Literacy Training

To address the isolation and lack of access felt by many adults, this program provides technology training to use Zoom, the internet, social media sites, email, smartphones, and more.

Adults select the device they would like training on: a computer, tablet, or smartphone. In some cases, a tablet will be provided for low-income seniors.

Visit to learn more: www.rsvpmc.org/digital-technology-training



Waverly Heights
A Life Plan Community

Waverly Heights
is a proud supporter
of RSVP.
Serving seniors for over 35 years.

WaverlyHeights.org • 610.645.8764



*Comprehensive
Business and
Accounting Solutions...
As Individual As The
Clients We Serve.*

1120 Welsh Road, Suite 200
North Wales, PA 19454
215.839.0985
www.ludwigconsultants.com



Thank You

Walter Fisher

For Your Support!



RSVP Programs

RSVP improves lives of vulnerable populations in the local community by focusing on education and wellness.

My Free Tutor

This cutting-edge virtual program enables volunteers to help students in grades 3-12 and veterans returning to college with math. Online sessions focus on areas of difficulty enabling the student to grasp challenging concepts.



Visit to learn more: www.rsvpmc.org/virtual-math-tutoring

STEM Career Presentations

Professionals share their career path journey through recorded sessions. Students are inspired and many recognize their potential to make education and career choices they may never have thought were possible. Individuals and organizations are encouraged to present.



Learn more: www.rsvpmc.org/stem-career-presentations

RSVP Programs

RSVP improves lives of vulnerable populations in the local community by focusing on education and wellness.



Volunteer Executive Consultants (VEC)

Business professionals utilize their skills to counsel and advise nonprofits on best practices to enhance growth and sustainability. VEC teams work collaboratively with nonprofit management to build and strengthen agency capacity. Members conduct educational seminars and workshops on topical issues.

Visit to learn more: www.rsvpmc.org/volunteer-consulting

PA MEDI – Medicare Counseling

State-trained volunteer Medicare counselors help inform recipients about the best possible combination of health insurance and prescription plans for their unique needs. Counselors meet in-person or consult via phone to provide unbiased information about coverage options. Sessions are free and confidential.



Visit to learn more: www.rsvpmc.org/medicare-help

Stradley Ronon
proudly supports
RSVP
changing lives for
more than 50 years

For over 95 years, Stradley Ronon has helped private and public companies — from small businesses to Fortune 500 corporations — achieve their goals. While we're proud of our many client achievements, we're just as dedicated to the communities in which we work and live. Through our financial contributions and volunteer efforts, we're pleased to support hundreds of nonprofit and charitable organizations.

www.stradley.com

Pennsylvania | Washington, D.C. | New York
California | New Jersey | Illinois | Delaware

STRADLEY
RONON



Building community together

At Univest, we firmly believe in giving back to the local communities we serve. For nearly 150 years, it's been our way of making a difference each day, through helping to improve the quality of life for our friends and neighbors. Because local values are as important to us as they are to you.

univest.net | 877.723.5571

COMMITTED TO LOCAL



RSVP Programs

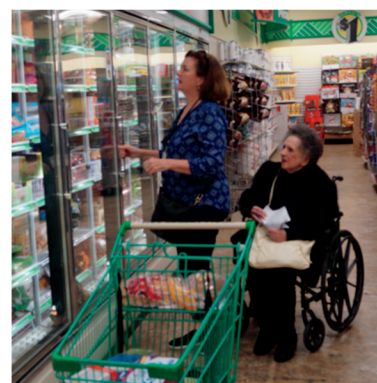
RSVP improves lives of vulnerable populations in the local community by focusing on education and wellness.

Community Programs

Volunteers are assigned to a role supporting a local nonprofit. Opportunities are available to deliver warm meals or groceries, staff food cupboards, help sort thrift shop donations, direct patients at hospitals, provide tours at historic or cultural facilities, and many other important roles.



Visit to learn more: www.rsvpmc.org/community-support



Senior Wellness

RSVP partners with several regional agencies to assist low-income seniors or disabled individuals with grocery shopping, and transportation to medical appointments, while providing much needed social interaction for isolated homebound seniors.

Visit to learn more: www.rsvpmc.org/senior-wellness

Please share these opportunities with friends and family!

Check Us Out on Social Media



Follow RSVP on social media to
stay up-to-date on volunteer needs,
events, workshops, and more.



Scan QR with your
smartphone to
connect with us.



is Proud to Support RSVP!

lets work together.

717.540.1481 | Info@displaysandgraphicsinc.com

thank you

to

Displays and Graphics Inc.
for providing the event signage
for today's event!



Making a difference

We celebrate the dedicated RSVP Volunteers!

Cohen Leib Robinson Spilove Investment Group

Wealth Management
877-428-5274

UBS Financial Services Inc.

101 West Elm Street
Suite 200
Conshohocken, PA 19428-2006
215-579-4500

advisors.ubs.com/clrs



*Thank You to
Our Title Sponsor*



TOPGOLF

King of Prussia, PA

TOPGOLF

LESSONS AND CLASSES

Are you new to golf and want to learn the basics? Or maybe you're new in town and want to find a new golf instructor? These single lesson options at Topgolf King of Prussia would be a great fit for you.

PLAN YOUR PARTY

If you're interested in hosting your party at Topgolf King of Prussia, give us a call at (484) 806-2483 or request more info and we'll make your time at Topgolf as turn-key as it gets.



PORSCHE

Dream faster.
Dream bigger.
Dream smaller.
Dream blue. White. Or Carmine Red.
Dream "best weekend ever".
Dream "best months ever".
Dream new dreams every day.

PORSCHE DRIVE. SUBSCRIBE MONTHLY,
RENT DAILY, DREAM ENDLESSLY.

Learn more at porschedrive.com

Porsche Main Line
Newtown Square

©2024 Porsche Drive LLC.

Helping you pursue your financial goals since 1890.

Equities | Mutual Funds | Retirement Plans
Unit Investment Trusts | Managed Accounts
Annuities | Financial Planning | Estate Planning

Paul M. MacCrory

*Senior Vice President/Investments
Manager, Philadelphia Market*

(610) 567-1901
(800) 223-6807

Millennium One
20 Ash Street, 4th Floor
Conshohocken, Pennsylvania 19428

STIFEL

Stifel, Nicolaus & Company, Incorporated | Member SIPC & NYSE | www.stifel.com



For life's must haves, there's

HAVERFORD

Cynthia A. Zickel, ChFC, CFP®
Vice President & Portfolio Manager
610.995.8717
czickel@haverfordquality.com

HAVERFORD

QUALITY INVESTING

HAVERFORDQUALITY.COM

SO LONG,
COMPLEXITY.

**HELLO,
BOOMI.**

Complexity. It's everywhere —
and it gets in the way of everything.
Productivity. Progress. Innovation.
Growth. Not any more. It's time to
get your data flowing and your
business growing. It's time to put
complexity behind you, forever.
It's time to talk to Boomi.

Boomi.com

boomi
Your Integration & Automation Partner.



THANK YOU

**St. John
Holdings, Inc.**

*FOR TODAY'S
GOLFER GIFTS*



**Life is Better with
a Personal Banker**

Contact your Personal Banker today!

Joseph Calabro, FSVP/Regional President
484-881-3810

joseph.calabro@firstbanknj.com

firstbanknj.com

FIRST BANK



Personal Bankers. Real Relationships.

Some serious pickleballers

Live
BOUNDLESSLY

PASSION + PURPOSE + COMMUNITY

Live the life you love.

Find out how at AboutActs.com/Golf or call (844) 797-2792.



Brittany Pointe Estates | Fort Washington Estates | Granite Farms Estates | Gwynedd Estates
Lima Estates | Normandy Farms Estates | Southampton Estates | Spring House Estates



Risler Financial Management

Proudly supports RSVP's Annual Golf Classic



Risler Financial Management is a Personalized Financial Planning Firm dedicated to competently and ethically guiding our clients toward their financial goals, enabling them to focus on the more meaningful aspects of their lives.



Eric Dean, MBA, CLTC

CERTIFIED FINANCIAL PLANNER™ Professional

610-825-5687

eric@rislerfinancial.com

Risler Financial Management | 5 Valley Square, Ste 110 | Blue Bell, PA

Securities offered through LPL Financial, member FINRA/SIPC. Investment advice offered through Private Advisor Group, a registered investment advisor. Private Advisor Group and Risler Financial Management are separate entities from LPL Financial.



Building Strength Together

Citadel is a not-for-profit credit union that exists to serve the people, businesses, and neighborhoods of Greater Philadelphia, so they can prosper. We provide our members with all things banking, plus the guidance to build and maintain financial security.



Bank • Save • Borrow • Plan

CitadelBanking.com

800.666.0191



Scan the QR code to
find a branch near you.

Federally Insured by NCUA

3450 06/24



WE ARE PROUD TO **SUPPORT OUR COMMUNITY**



CONNECT WITH US

psbt.com | 888 868 3858

